

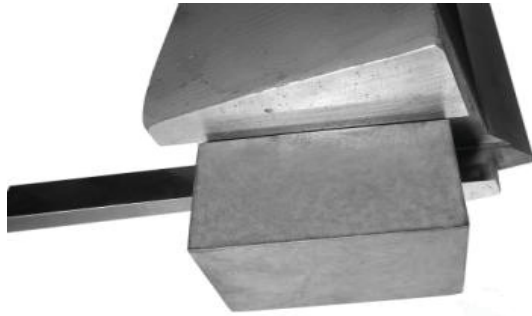
FOR PRICES GO TO PARTS PAGE!

STD Dies for Little Giant Power Hammers

All part numbers beginning with "H" are for 25 LB Little Giants;

All part numbers beginning with "K" are for 50 LB Little Giants;

All part numbers beginning with "P" are for 100LB Little Giants

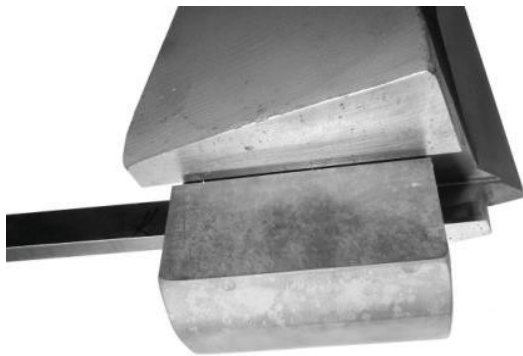


H7 OS Flat workface 2"x 3"
K7 OS Flat workface 2 1/2" x 4"
P7 Flat workface 3" x 6", 3" x 8",
and 4" x 8"

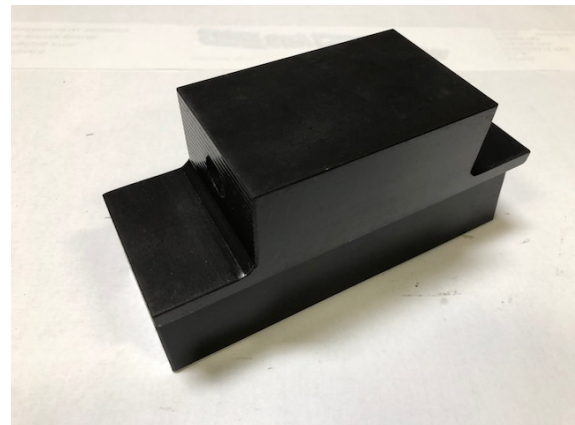


Combination Dies sold as set—
matching upper and lower.

H7/8 Combo workface 2"x 4"
K7/8 Combo workface 2.5"x5"
P7/8 Combo workface 3" x 8"



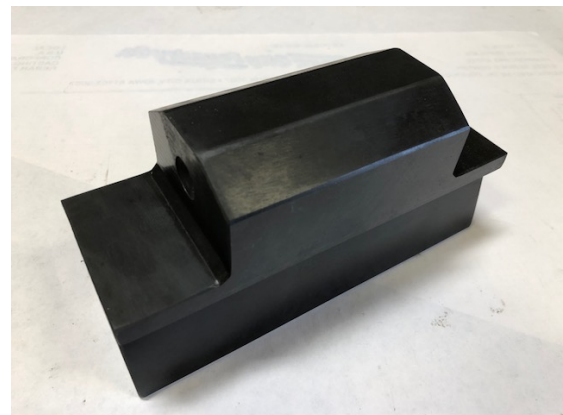
H7 OS Draw workface 2"x 3"
K7 OS Draw workface 2 1/2"x 4"
P7 Draw workface 3" x 6"



H8 Flat workface 2"x 3"
K8 Flat workface 2.5"x 4"



P8 Flat workface 3" x 6", 3" x 8",
and 4" x 8"



H8 Draw workface 2" x 3"
K8 Draw workface 2.5" x 4"

NEW Knife Dies

H7 Knife Die Workface 2" x 4.5"

H8 Knife Die Workface 2" x 5.5"

