

# Little Giant Power Hammer

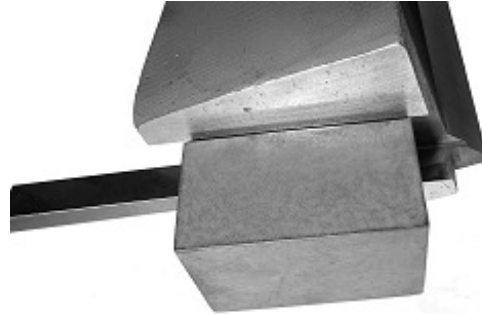
402-873-6603

## 50 lb. Die Price List with Photos

K7 Flat: **work face 2" x 4"** \$155.00



K7 OS Flat: **work face 2 1/2" x 4"** \$163.00



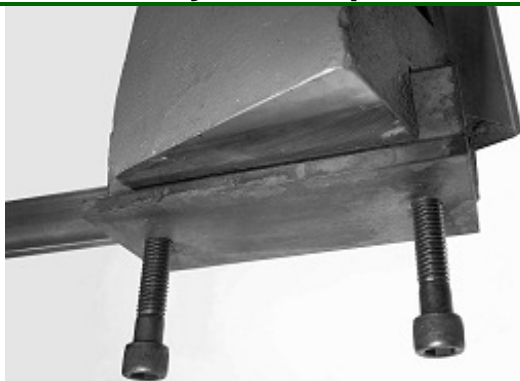
K7 Draw: **work face 2" x 4"** \$159.00



K7 OS Draw: **work face 2 1/2" x 4"** \$183.00



## KDS Die System: 2 pieces that replace 1 upper die



KDS Upper Base for Die System: **Install in dovetail of ram with die key. 2 holes are drilled and tapped so different die tops can be changed quickly and easily using countersunk bolts.**

\$143.00



KDS Flat: **Flat Die Top: bolts to base, work face 2" x 3"**

\$115.00



KDS Draw: **Drawing Die Top: bolts to base, work face 2" x 3"**

\$129.00



KDS Texturing: **Narrow Draw Die Top: bolts to base, work face 1/2" X 3"**

\$130.00

**Best used in pairs, upper and lower.**



Combination Die Set:

1/2 Flat, 1/2 Drawing

K7/8 Combination: **work face 2"x 4"**. **Upper and lower die set**

\$385.00

## Lower Dies:

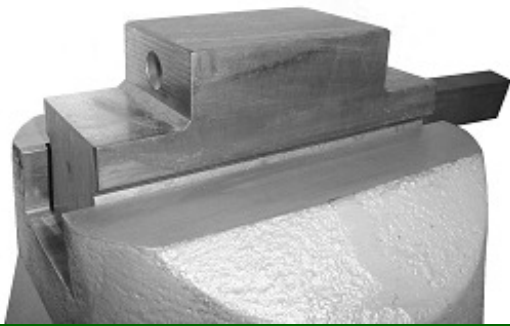
K8 Flat: **work face 2"x 3"** \$206.00



K8 Draw: **work face 2"x 3"** \$214.00



K8 Tooling: **work face 2" x 3"** \$227.00



## KDS Die System: 2 pieces that replace 1 lower die



KDS Lower Base for Die System: **Install in dovetail of machine with die key. 2 holes are drilled and tapped so different die tops can be changed quickly and easily using countersunk bolts.**

\$143.00



KDS Flat: **Flat Die Top: bolts to base, work face 2" x 3"**

\$115.00



KDS Draw: **Flat Die Top: bolts to base, work face 2" x 3"**

\$129.00



HDS Texturing: **Narrow Draw Die Top: bolts to base, work face 1/2" X 3"**

\$130.00

**Best used in pairs, upper and lower.**



HDS HR: **Die Top to Make Half Round, 1/4", 3/8" or 1/2":**

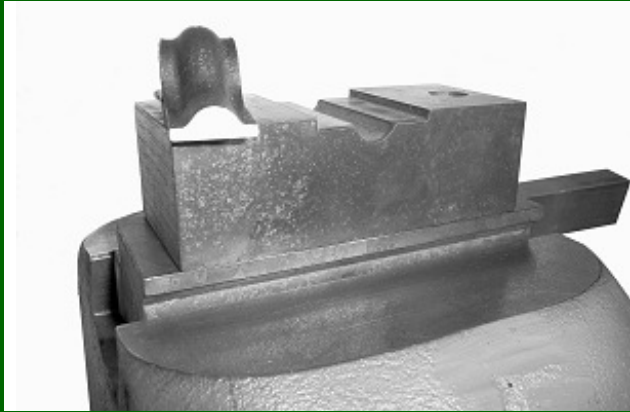
\$128.00

**Use with Flat Upper Die**



HDS RC: **Die Top to Make Rail Cap:**

\$128.00  
**with Flat Upper Die.**



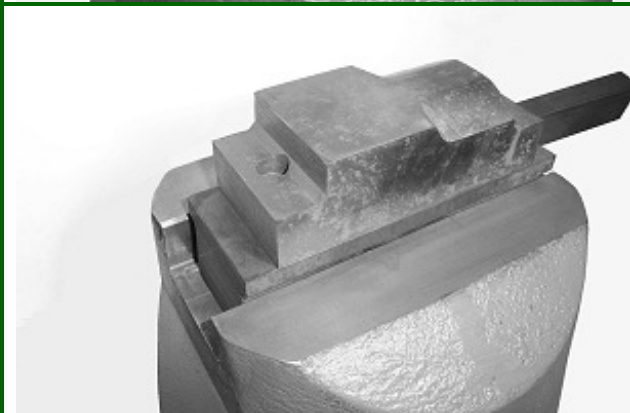
HDS FC: **Die Top to Make Full Collar:**

\$121.00  
**Use with Flat Upper Die.**



HDS HC: **Die Top to Make Half Collar:**

\$123.00  
**Use with Flat Upper Die.**



KDS Combo: **Die Top  $\frac{1}{2}$  Flat,  $\frac{1}{2}$  Drawing: work face  $2\frac{1}{2}$ " x 4". Sold as a set, upper and lower.**

\$312.00